

Firebox T45-CW Hardware Guide

WatchGuard Firebox is a comprehensive advanced network security platform that puts IT security professionals back in charge of their networks with widely deployable, enterprise-grade security and threat visibility tools suitable for any organization, regardless of budget, size, or complexity.

The Firebox T45-CW supports up to 20 users looking for intelligent network security appliances to secure small environments such as a temporary site, branch office, or retail POS. The Firebox T45-CW features 5G cellular and dual-band Wi-Fi 6 options built into the device that minimize disruptions to network activity.

Fireware OS

The Firebox T45-CW supports WatchGuard's next generation UTM OS—Fireware® OS. Each Firebox appliance includes Fireware OS and delivers exceptional protection against today's sophisticated threats to make sure that your business stays connected. For more information on the features of Fireware OS, see [Fireware Help](#).

Package Contents

- Firebox T45-CW appliance
- Quick Start Guide
- 1 RJ45 Ethernet cable
- 1 power adapter (100-240V)
- 1 power cord (US, AU, EU, UK)
- 4 external antennas
- 4 antenna terminal covers

About Your Hardware

Hardware Specifications

Processor	NXP LS1043ASE7QQB, 1.6GHz, 4-Core
Memory	DDR4 4GB
Storage	M.2 SSD 16GB
Power Supply	Input Ratings: 100-240V AC, 50-60Hz, 1.5A Max Output Ratings: 12V DC, 4A, 48W
MTBF	477,304 hours
Dimensions	D = 203.2 mm (8") W = 215.9 mm (8.5") H = 45.72 mm (1.8")
Weight	0.983 kg (2.17 lbs)

Interface Specifications

Network Interfaces	5 RJ45 connectors, 1000Base-TX (10/100/1000Mbps)
Cellular Interface	5G NR Nano SIM card slot

Antennas	4 x SMA type external antennas (included)
Radio Type and Frequency Band	2x2 802.11ax Wi-Fi 6 dual band radios: <ul style="list-style-type: none">■ 2.4 GHz: Data rates up to 573 Mbps■ 5 GHz: Data rates up to 1.2 Gbps
I/O Interfaces	1 USB 3.0, Type-A 1 RJ45 Serial Port

Environmental Requirements

To safely install your Firebox, we recommend that you:

- Install it indoors.
- Put it in a secure area, such as a locked room, to block the device from people who do not have permission to use it.
- Connect it to a conditioned power supply to prevent damage from sudden power changes.

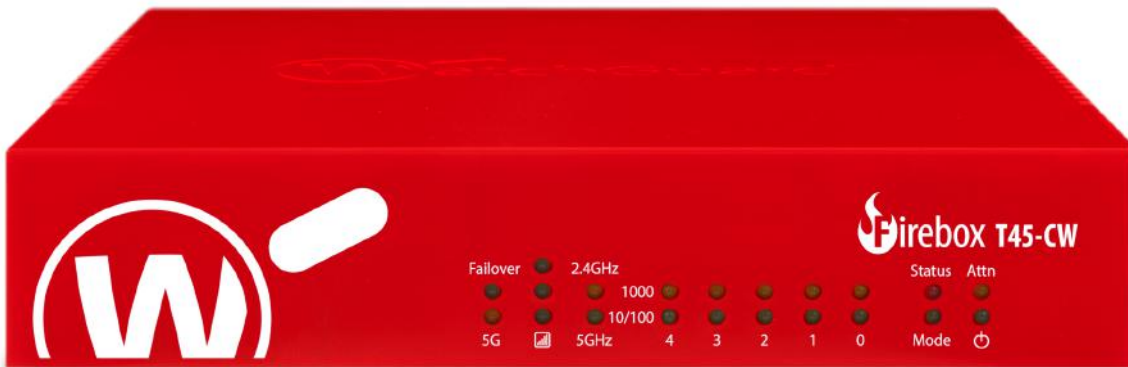
Other environmental requirements:

- Operating temperature: 0° to 40°C (32° to 104°F)
- Operating humidity: 0% to 95% non-condensing
- Non-operating temperature: -25° to 75°C (-13° to 167°F)
- Non-operating humidity: 0% to 95% non-condensing

Hardware Description

Front View

Front view of the Firebox:



Failover

The Failover indicator is lit when there is a WAN failover from the primary external interface to the backup interface. After the external interface connection fails back to the primary external interface, the indicator is not lit.

5G

The 5G indicator is lit when a cellular connection is active.

The indicator is green when a 5G connection is active.

The indicator is yellow when a 4G LTE connection is active.

Signal Strength ()

Indicates the signal strength of the cellular connection.

2.4GHz and 5GHz

The 2.4 GHz and 5 GHz wireless radio indicators are lit when the wireless interface is enabled. The light blinks when data is sent and received. The speed of the blink increases as the data flow increases.

Network Interface Status Indicators

The Firebox T45-CW has five network interfaces. There are two status indicators for each interface.

Indicator	Indicator Color	Interface Status
1000 Yellow	On	Link speed: 1000 Mbps
	Blinks (speed of blink increases as the data flow increases)	Data sent and received
10/100 Green	On	Link speed: 10 Mbps or 100 Mbps
	Blinks (speed of blink increases as the data flow increases)	Data sent and received

Status

The Status indicator is lit when there is a management connection to the device. The Status indicator is lit for 30 seconds after you connect to the device with the Fireware Web UI or the command line interface. It is also lit when the device is polled by WatchGuard System Manager.

Mode

The Mode indicator shows the status of the external network connection. If the device can connect to the external network and send traffic, the indicator is green. The indicator flashes if the device cannot send traffic to the external network.

Attn

The Attn indicator is yellow when you start the device with the Reset button pressed. For more information, see [Restore Factory-Default Settings](#).

Power (🔌)

The Power indicator shows the power status. It is green when the Firebox is powered on.

Rear View

Rear view of the Firebox:



Reset Button

This resets the device. For instructions on how to restore the device to factory-default settings, go to [Restore Factory-Default Settings](#).

SIM Card Slot

To enable a cellular connection as an external interface, insert an activated Nano SIM card. For more information, go to [SIM Card Installation](#).

Serial Port (Console)

The leftmost port is an RJ45 serial console port. An RJ45 serial cable is not included with the device. For information on how to connect to the Fireware CLI (Command Line Interface) with the serial port, go to the [Fireware CLI Reference Guide](#).

USB Interface

The device includes one USB 3.0 interface. Connect a USB storage device for USB backup and restore, or to store a support snapshot. For more information, go to [Use a USB Drive for System Backup and Restore](#) in *Fireware Help*.

Network Interfaces

The Ethernet interfaces have standard RJ45 connectors and support link speeds of 10, 100, or 1000 Mbps.

The Firebox T45-CW has five network interfaces. These interfaces are labeled 0/WAN, 1/LAN, 2, 3, 4.

Interfaces 1 to 4 only support full duplex connections. Make sure the Firebox interfaces and network devices you connect to these ports are set to auto-negotiation or full duplex. Interface 0 supports both half and full duplex connections.

Power Switch

Controls the power supplied to the device. Move the switch to position **1** to power on the device, or position **0** to power it off.

Power Input

An AC power adapter is included with your device. Connect the AC adapter to the device and to a power source. Use only the supplied AC power adapter.

Antenna Connectors

Connect the antennas to the SMA-type antenna connectors on the rear of the device. For more information, go to [Antenna Installation](#).

Antenna Installation

4 SMA-type external antennas for 5G cellular are included with the device.

4 rubber antenna terminal covers are also included to protect the antenna connection.

1. Remove the protective caps from the antenna connectors on the rear of the Firebox.
2. Before you attach the antennas, slide the rubber antenna terminal cover over the end of the antenna, and leave the screw cap exposed.



3. Insert the antennas into the connector on the Firebox, then turn the screw cap clockwise to tighten.

4. Slide the rubber antenna terminal cover forward to fully cover the connector.



SIM Card Installation

To install a SIM card to enable a cellular connection as an external interface on the Firebox:

1. Power off the Firebox.
2. Insert a SIM card tool or paper clip into the hole to eject the SIM card tray.

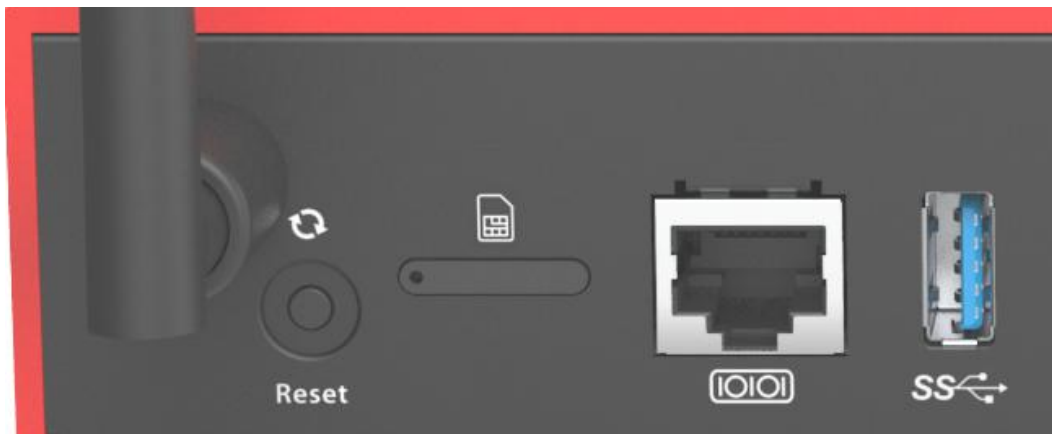


3. Insert an activated Nano SIM card into the SIM card tray.

Align the direction of the SIM card and the placement of the diagonal edge based on the diagram under the SIM card tray.



4. Insert the SIM card tray into the Firebox.



5. Power on the Firebox.

Verizon is currently not supported for cellular connectivity with the 5G modem on the T45-CW.

IMEI Number Information

The IMEI (International Mobile Equipment Identity) number of the cellular modem interface is located on a sticker on the bottom of the Firebox.

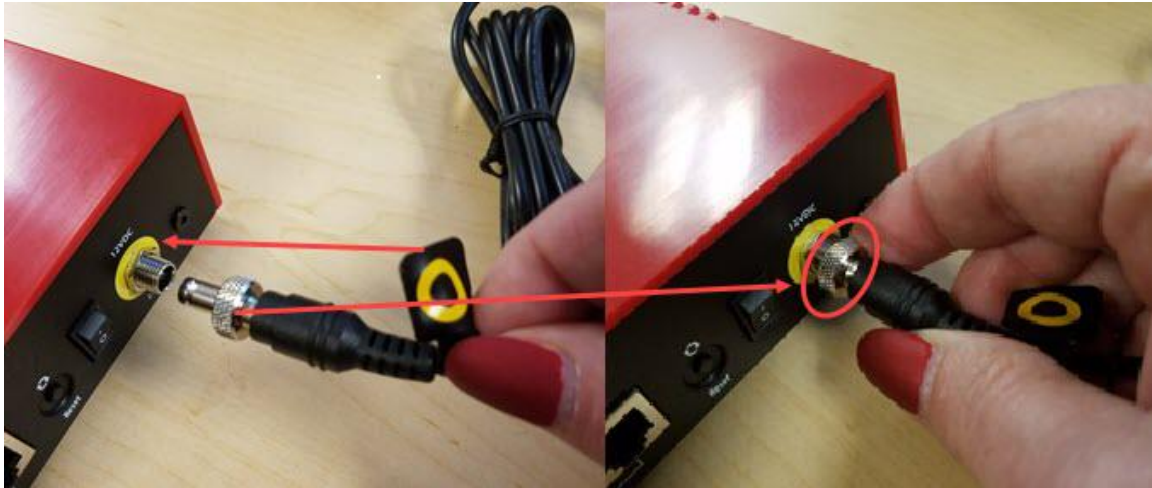
AC Power Adapter

The AC power adapter supplies power for the Firebox. The power supply connector has a screw-type retention mechanism. To prevent a disruption in the power supply, tighten the screw on the connector.

Before you connect the adapter, verify that the color band on the cord matches the color ring around the power plug on the Firebox.

To safely connect the power supply:

Insert the silver connector on the power cord into the power port on the Firebox. Tighten the screw until the connector is securely attached to the Firebox.



A Firebox T45-CW shipped outside the United States has a power adapter with blades, and includes four power plugs to connect to the AC power adapter. Use the correct power plug for the power source used in your country.

The AC power cord is only for WatchGuard products, and not usable for other equipment.

Cooling Fan

The Firebox T45-CW has an internal cooling fan to decrease the internal temperature of the device.

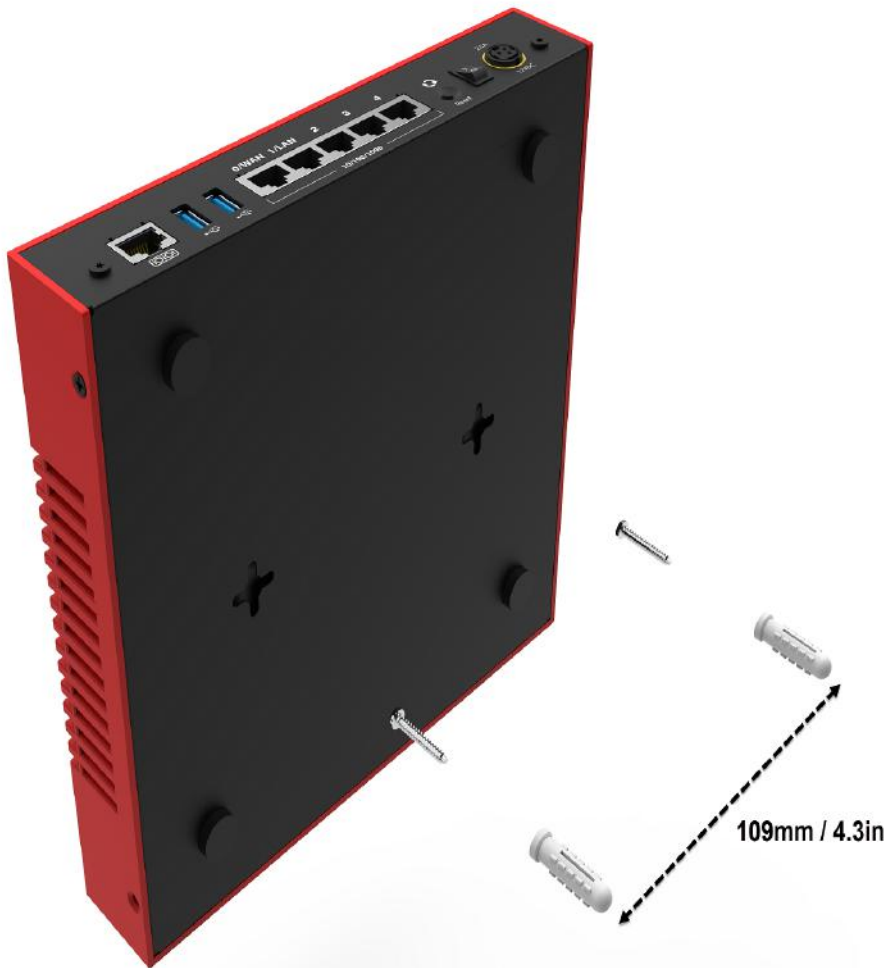
- The fan is designed to start at boot time and run continuously at low speed to maintain an optimal temperature.
- When the temperature rises, and the CPU temperature exceeds 85°C, the fan switches to high speed.
- When the CPU temperature drops to 75°C, the fan speed decreases to low speed.
- The Firebox shuts down if the CPU temperature is greater than 100°C.

Wall Mount the Firebox

In some environments, you might want to mount the Firebox on a wall to improve the wireless range.

You can use the holes on the bottom of the Firebox to mount the device to a wall with appropriate screws and anchors (not included).

(Maximum screw head diameter 8mm / 0.315in, maximum thread diameter 3.8mm / 0.15in)



1. Determine where the Firebox will be placed and mark the location for the two mounting holes (109mm / 4.3in apart).
2. Drill the two mounting holes and hammer the anchors into the holes.
3. Insert and tighten the screws into the anchors. Leave part of the screw exposed so you can place the Firebox on the screws.
4. Align the screws with the holes on the bottom of the Firebox and place the Firebox on the screws.
5. Slide the Firebox to secure the screws in the slots of the mounting holes.
6. Adjust the screws as necessary to make sure the Firebox is safely secured to the wall.

Restore Factory-Default Settings

If you have a problem in your configuration file that you cannot correct, you can restore the factory-default settings and start from a new configuration file. For example, if you do not know the administrator account passphrase, or if a power interruption causes damage to the Fireware OS, you can restore the Firebox to the factory-default settings and build your configuration again.

To reset the Firebox to factory-default settings:

1. Power off the Firebox.
2. Press and hold the **Reset** button on the back of the Firebox.
3. Power on the Firebox while you continue to hold the **Reset** button.
4. Continue to hold the **Reset** button until the **Attn** indicator on the front of the Firebox begins to flash.
5. Release the **Reset** button.
6. Wait until the **Attn** indicator stays lit and does not flash.
7. Power off the Firebox.
8. Power on the Firebox.

The Firebox restarts with factory-default settings.

Notices

All WatchGuard products are designed and tested to meet strict safety requirements. These requirements include product safety approvals and other global compliance standards. Please read the following instructions carefully before operating the product, and refer to them as needed to ensure the continued safe operation of your product.

Product Safety Certification

The WatchGuard product is safety certified under the following standards:

- CAN/CSA C22.2 No.60950-1-07, Second Edition 2014-10
- UL 60950-1, Second Edition 2014-10-14
- IEC 60950-1, 2005+A1:2009+A2:2013
- IEC 62368-1: 2014 2nd edition
- EN 60950-1:2006+A11:2009+A1:2010+A12:2011+A2:2013

Safety Warning

- The AC power cord is only for WatchGuard products, and not usable for other equipment.
本コードは本製品専用です。他の機器には使用しないでください。
- Do not place objects on the power cord.
- Do not obstruct the ventilation openings. These openings prevent overheating of the machine.
- Never push objects of any kind into slots or openings on this equipment. Making a contact with a voltage point or shorting out a part may result in fire or electrical shock.
- When removing or installing an appliance, follow the general installation safety instructions.
- You must disconnect the AC power cord from the Firebox before you remove the cover of the Firebox for any reason.
- There is risk of explosion if the battery is replaced by an incorrect type. Dispose of used batteries according to the manufacturer's instructions.
警告 本電池如果更換不正確會有爆炸的危險，請勿自行更換電池。

Disclaimer

WatchGuard shall not be held liable if the end user alters, modifies, or repairs any WatchGuard hardware appliance.

Avis

Tous les produits WatchGuard sont conçus et testés pour répondre à des exigences de sécurité strictes. Ces exigences comprennent les approbations de sécurité des produits et d'autres normes de conformité mondiales. Veuillez lire attentivement ces instructions avant d'utiliser le produit, et consultez-les si nécessaire pour assurer le fonctionnement continu et sûr de votre produit.

- CAN/CSA C22.2 No.60950-1-07, Second Edition 2014-10
- UL 60950-1, Second Edition 2014-10-14
- IEC 60950-1, 2005+A1:2009+A2:2013
- IEC 62368-1: 2014 2nd edition
- EN 60950-1:2006+A11:2009+A1:2010+A12:2011+A2:2013

Remarques sur la sécurité

- Le cordon d'alimentation secteur est uniquement destiné aux produits WatchGuard et ne peut pas être utilisé pour d'autres équipements.
- Ne placez pas d'objets sur le cordon d'alimentation.
- Ne pas obstruer les ouvertures de ventilation. Ces ouvertures évitent la surchauffe de la machine.

- N'introduisez jamais d'objets d'aucune sorte dans les fentes ou les ouvertures de cet équipement. Établir un contact avec un point de tension ou court-circuiter une pièce peut entraîner un incendie ou un choc électrique.
- Lors de la dépose ou de l'installation d'un appareil, respectez les consignes générales de sécurité d'installation.
- Vous devez débrancher le cordon d'alimentation CA du Firebox avant de retirer le couvercle du Firebox pour quelque raison que ce soit.
- Il y a un risque d'explosion si la batterie est remplacée par un type incorrect. Jetez les piles usagées conformément aux instructions du fabricant.

Clause de non-responsabilité

WatchGuard décline toute responsabilité si l'utilisateur final altère, modifie ou répare tout appareil matériel WatchGuard.

Hinweise Zur Sicherheit

Alle WatchGuard Produkte werden entwickelt und getestet, um strenge Sicherheitsanforderungen zu erfüllen. Diese Anforderungen umfassen Produktsicherheit Zulassungen und andere globale Compliance-Standards. Bitte lesen Sie die folgenden Anweisungen sorgfältig, bevor Sie das Produkt, und bezeichnen sie als notwendig, um den sicheren Betrieb des Geräts zu gewährleisten. Weitere Informationen finden Sie in der elektronischen Hardware Guide.

Die WatchGuard Produkt ist Sicherheit unter den folgenden Normen zertifiziert

- CAN/CSA C22.2 No.60950-1-07, Second Edition 2014-10
- UL 60950-1, Second Edition 2014-10-14
- IEC 60950-1:2005+A1:2009+A2:2013
- IEC 62368-1: 2014 2nd edition
- EN 60950-1:2006+A11:2009+A1:2010+A12:2011+A2:2013

Sicherheitshinweis

- Das Netzkabel ist nur für WatchGuard-Produkte und nicht für andere Geräte geeignet.
- Legen Sie keine Gegenstände auf das Netzkabel.
- Verdecken Sie nicht die Lüftungsöffnungen. Diese Öffnungen verhindern eine Überhitzung der Maschine.
- Stecken Sie niemals Gegenstände jeglicher Art in die Schlitze oder Öffnungen des Geräts stecken. Der Kontakt mit einem spannungsführenden Punkt oder das Kurzschließen eines Bauteils kann zu einem Brand oder elektrischen Schlag führen.
- Beim Entfernen oder Installieren eines Gerätes, nach den allgemeinen Installation Sicherheitshinweise.
- Sie müssen das Netzkabel von der Firebox trennen, bevor Sie die Abdeckung der Firebox aus irgendeinem Grund entfernen.
- Es besteht Explosionsgefahr, wenn die Batterie durch einen falschen Typ ersetzt wird. Entsorgen Sie gebrauchte Batterien gemäß den Anweisungen des Herstellers.

Haftungsausschluss

WatchGuard haftet nicht, wenn der Endbenutzer eine Hardware-Appliance von WatchGuard ändert, modifiziert oder repariert.

Aviso De Seguridad

Todos los productos WatchGuard están diseñados y probados para satisfacer estrictos requisitos de seguridad. Estos requisitos incluyen la homologación de productos de seguridad y otras normas de cumplimiento global. Por favor, lea atentamente las siguientes instrucciones antes de utilizar el producto, y se refieren a ellos como sea necesario para garantizar el funcionamiento seguro y continuo de su producto. Información adicional se puede encontrar en la Guía del usuario electrónica.

Certificación de seguridad del producto

El producto tiene certificación de seguridad WatchGuard bajo las siguientes normas:

- CAN/CSA C22.2 No.60950-1-07, Second Edition 2014-10
- UL 60950-1, Second Edition 2014-10-14
- IEC 60950-1:2005+A1:2009+A2:2013
- IEC 62368-1: 2014 2nd edition
- EN 60950-1:2006+A11:2009+A1:2010+A12:2011+A2:2013

Advertencia de seguridad

- El cable de alimentación de CA es solo para productos WatchGuard y no se puede usar para otros equipos.
- No coloque objetos sobre el cable de alimentación.
- No obstruya las aberturas de ventilación. Estas aberturas evitan el sobrecalentamiento de la máquina.
- Nunca introduzca objetos de ningún tipo en las ranuras o aberturas del equipo. El contacto con puntos de voltaje o el cortocircuito de una pieza podría provocar un incendio o una descarga eléctrica.
- Al extraer o instalar un electrodoméstico, siga las instrucciones generales de instalación de seguridad.
- Debe desconectar el cable de alimentación de CA del Firebox antes de quitar la tapa del Firebox por cualquier motivo.
- Existe riesgo de explosión si la batería se reemplaza por una del tipo incorrecto. Deseche las baterías usadas de acuerdo con las instrucciones del fabricante.

Descargo de responsabilidad

WatchGuard no será responsable si el usuario final altera, modifica o repara cualquier dispositivo de hardware de WatchGuard.

Federal Communications Commission (USA) Statement

Operations in the 5.15-5.25GHz band are restricted to indoor usage only. This equipment has been tested and found to comply with the limits for a Class B digital device, pursuant to Part 15 of the FCC Rules. These limits are designed to provide reasonable protection against harmful interference in a residential installation. This equipment generates, uses and can radiate radio frequency energy and, if not installed and used in accordance with the instructions, may cause harmful interference to radio communications. However, there is no guarantee that interference will not occur in a particular installation. If this equipment does cause harmful interference to radio or television reception, which can be determined by turning the equipment off and on, the user is encouraged to try to correct the interference by one of the following measures:

- Reorient or relocate the receiving antenna.
- Increase the separation between the equipment and receiver.
- Connect the equipment into an outlet on a circuit different from that to which the receiver is connected.
- Consult the dealer or an experienced radio/TV technician for help.

FCC Caution: Any changes or modifications not expressly approved by the party responsible for compliance could void the user's authority to operate this equipment.

This device complies with Part 15 of the FCC Rules. Operation is subject to the following two conditions:

1. This device may not cause harmful interference, and
2. this device must accept any interference received, including interference that may cause undesired operation.

This device and its antenna(s) must not be co-located or operating in conjunction with any other antenna or transmitter.

For product available in the USA/Canada market, only channel 1-11 can be operated. Selection of other channels is not possible.

This device is restricted to indoor use.

FCC Radiation Exposure Statement: (Wireless)

This equipment complies with FCC radiation exposure limits set forth for an uncontrolled environment. This equipment should be installed and operated with minimum distance 20cm between the radiator & your body. This transmitter must not be co-located or operating in conjunction with any other antenna or transmitter.

This radio transmitter [FCC ID: Q6G-BS4AE5CW] has been approved by FCC to operate with the antenna types listed below, with the maximum permissible gain indicated. Antenna types not included in this list that have a gain greater than the maximum gain indicated for any type listed are strictly prohibited for use with this device.

Model Name	Ant. Type	Support	Max Peak Gain
7102A0608000	PCB	2.4/5 GHz	3.16 (2.4 GHz) 5.05 (5 GHz)
7102A0608000	PCB	2.4/5 GHz	3.01 (2.4 GHz) 5.11 (5 GHz)
7102A0499000	Dipole	WWAN	1.17 (LB, band 5,8,12,13,14,17,18,19,20,26,28,29,71) 2.97 (MHB, band 1,2,3,4,7,25,30,32,34,38,39,40,41,66) 2.96 (UHB, band 42,48) 1.96 (LAA, Band 46)
7102A0499000	Dipole	WWAN	1.17 (LB, band 5,8,12,13,14,17,18,19,20,26,28,29,71) 2.97 (MHB, band 1,2,3,4,7,25,30,32,34,38,39,40,41,66) 2.96 (UHB, band 42,48) 1.96 (LAA, Band 46)
7102A0499000	Dipole	WWAN	1.17 (LB, band 5,8,12,13,14,17,18,19,20,26,28,29,71) 2.97 (MHB, band 1,2,3,4,7,25,30,32,34,38,39,40,41,66) 2.96 (UHB, band 42,48) 1.96 (LAA, Band 46)
7102A0499000	Dipole	WWAN	1.17 (LB, band 5,8,12,13,14,17,18,19,20,26,28,29,71) 2.97 (MHB, band 1,2,3,4,7,25,30,32,34,38,39,40,41,66) 2.96 (UHB, band 42,48) 1.96 (LAA, Band 46)

CE (European Union) Radiation Exposure Statement

This equipment complies with CE radiation exposure limits set forth for an uncontrolled environment. This equipment should be installed and operated with greater than 24cm between the radiator & your body.

ISED (Canada) Statement

This device contains licence-exempt transmitter(s)/receiver(s) that comply with Innovation, Science and Economic Development Canada's licence-exempt RSS(s). Operation is subject to the following two conditions:

1. This device may not cause interference.
2. This device must accept any interference, including interference that may cause undesired operation of the device.

L'émetteur/récepteur exempt de licence contenu dans le présent appareil est conforme aux CNR d'Innovation, Sciences et Développement économique Canada applicables aux appareils radio exempts de licence.

L'exploitation est autorisée aux deux conditions suivantes :

1. L'appareil ne doit pas produire de brouillage;

2. L'appareil doit accepter tout brouillage radioélectrique subi, même si le brouillage est susceptible d'en compromettre le fonctionnement.

The device for operation in the band 5150-5250 MHz is only for indoor use to reduce the potential for harmful interference to co-channel mobile satellite systems.

Les dispositifs fonctionnant dans la bande 5150-5 250 MHz sont réservés uniquement pour une utilisation à l'intérieur afin de réduire les risques de brouillage préjudiciable aux systèmes de satellites mobiles utilisant les mêmes canaux.

IC Radiation Exposure Statement:

This equipment complies with IC RSS-102 radiation exposure limits set forth for an uncontrolled environment. This equipment should be installed and operated with minimum distance 24cm between the radiator & your body.

Cet équipement est conforme aux limites d'exposition aux rayonnements IC établies pour un environnement non contrôlé. Cet équipement doit être installé et utilisé avec un minimum de 24cm de distance entre la source de rayonnement et votre corps

The transmitter module may not be co-located with any other transmitter or antenna.

Le module émetteur peut ne pas être coïmplanté avec un autre émetteur ou antenne.

CAN ICES-003 (B)/NMB-003(B) (Canada)

The Country Code Selection feature is disabled for products marketed in the US/Canada.

For product available in the USA/Canada market, only channel 1-11 can be operated. Selection of other channels is not possible.

Pour les produits disponibles aux États-Unis / Canada du marché, seul le canal 1 à 11 peuvent être exploités. Sélection d'autres canaux n'est pas possible.

This radio transmitter [IC: 4657A-BS4AE5CW] has been approved by Innovation, Science and Economic Development Canada to operate with the antenna types listed below, with the maximum permissible gain indicated. Antenna types not included in this list that have a gain greater than the maximum gain indicated for any type listed are strictly prohibited for use with this device.

Le présent émetteur radio [IC: 4657A-BS4AE5CW] a été approuvé par Innovation, Sciences et Développement économique Canada pour fonctionner avec les types d'antenne énumérés ci dessous et ayant un gain admissible maximal. Les types d'antenne non inclus dans cette liste, et dont le gain est supérieur au gain maximal indiqué pour tout type figurant sur la liste, sont strictement interdits pour l'exploitation de l'émetteur.

Model Name	Ant. Type	Support	Max Peak Gain
7102A0608000	PCB	2.4/5 GHz	3.16 (2.4 GHz) 5.05 (5 GHz)
7102A0608000	PCB	2.4/5 GHz	3.01 (2.4 GHz) 5.11 (5 GHz)
7102A0499000	Dipole	WWAN	1.17 (LB, band 5,8,12,13,14,17,18,19,20,26,28,29,71) 2.97 (MHB, band 1,2,3,4,7,25,30,32,34,38,39,40,41,66) 2.96 (UHB, band 42,48) 1.96 (LAA, Band 46)
7102A0499000	Dipole	WWAN	1.17 (LB, band 5,8,12,13,14,17,18,19,20,26,28,29,71) 2.97 (MHB, band 1,2,3,4,7,25,30,32,34,38,39,40,41,66) 2.96 (UHB, band 42,48) 1.96 (LAA, Band 46)
7102A0499000	Dipole	WWAN	1.17 (LB, band 5,8,12,13,14,17,18,19,20,26,28,29,71) 2.97 (MHB, band 1,2,3,4,7,25,30,32,34,38,39,40,41,66) 2.96 (UHB, band 42,48)

Model Name	Ant. Type	Support	Max Peak Gain
			1.96 (LAA, Band 46)
7102A0499000	Dipole	WWAN	1.17 (LB, band 5,8,12,13,14,17,18,19,20,26,28,29,71) 2.97 (MHB, band 1,2,3,4,7,25,30,32,34,38,39,40,41,66) 2.96 (UHB, band 42,48) 1.96 (LAA, Band 46)

Declaration of Conformity (EU) (Wireless)

This device complies with the essential requirements of the RED 2014/53/EU. The following test methods have been applied in order to prove presumption of conformity with the essential requirements of the RED 2014/53/EU:

EN 60950-1:2006+A11:2009+A1:2010+A12:2011+A2:2013

This standard is applicable to mains-powered or battery-powered information technology equipment, including electrical business equipment and associated equipment, with a rated voltage not exceeding 600 V.

EN 62368-1:2014+A11:2017

Safety standard that classifies energy sources, prescribes safeguards against those energy sources, and provides guidance on the application of, and requirements for, those safeguards.

EN 55032:2015/AC:2016-07

Electromagnetic compatibility of multimedia equipment. Emission requirements.

EN 55024:2010/A1:2015

Information technology equipment - Immunity characteristics - Limits and methods of measurement

EN 55035:2017

Electromagnetic compatibility of multimedia equipment. Immunity requirements.

EN 300 386 V2.1.1 (2016-07)

Telecommunication network equipment; Harmonised Standard for ElectroMagnetic Compatibility (EMC) requirements.

EN 61000-3-2:2019

Limits for harmonic current emissions (equipment input current ≤ 16 A per phase).

EN 61000-3-3:2013/A1:2019

Electromagnetic compatibility (EMC) Limits. Limitation of voltage changes, voltage fluctuations and flicker in public low-voltage supply systems, for equipment with rated current ≤ 16 A per phase and not subject to conditional connection.

EN 61000-4-2 Edition 2.0 2008-12

Electromagnetic compatibility (EMC) Testing and measurement techniques. Electrostatic discharge immunity test.

EN 61000-4-3 Edition 3.2 2010-04

Electromagnetic compatibility (EMC) Testing and measurement techniques. Radiated, radio-frequency, electromagnetic field immunity test.

EN 61000-4-4 Edition 3.0 2012-04

Electromagnetic compatibility (EMC) Testing and measurement techniques. Electrical fast transient/burst immunity test.

EN 61000-4-5 Edition 3.1 2017-08

Electromagnetic compatibility (EMC) Testing and measurement techniques. Surge immunity test.

EN 61000-4-6 Edition 4.0 2013-10

Electromagnetic compatibility (EMC) Testing and measurement techniques. Immunity to conducted disturbances, induced by radio-frequency fields.

EN 61000-4-11 Edition 2.1 2017-05

Electromagnetic compatibility (EMC) Testing and measurement techniques. Voltage dips, short interruptions and voltage variations immunity tests for equipment with input current up to 16 A per phase.

EN 301 489-1 v2.1.1 (2017-03)

Electromagnetic compatibility and Radio Spectrum Matters (ERM); ElectroMagnetic Compatibility (EMC) standard for radio equipment and services; Part 1: Common technical requirements

EN 301 489-17 v3.1.1 (2017-02)

Electromagnetic compatibility and Radio spectrum Matters (ERM); ElectroMagnetic Compatibility (EMC) standard for radio equipment and services; Part 17: Specific conditions for 2.4 GHz wideband transmission systems and 5 GHz high performance RLAN equipment

EN 300 328 V2.2.2 (2019-11)

Electromagnetic compatibility and Radio spectrum Matters (ERM); Wideband Transmission systems; Data transmission equipment operating in the 2,4 GHz ISM band and using spread spectrum modulation techniques; Harmonized EN covering essential requirements under article 3.2 of the RED Directive

EN 301 893 v2.1.1 (2017-05)

Broadband Radio Access Networks (BRAN); 5 GHz high performance RLAN; Harmonized EN covering essential requirements of article 3.2 of the RED Directive


EN 301 908-1 V13.1.1 (2019-11)

IMT cellular networks - Harmonised Standard for access to radio spectrum.

This device has software that cannot affect compliance with the Radio Equipment Directive (RED) 2014/53/EU, even if the software is changed or replaced.

This device is a 5GHz wideband transmission system (transceiver), intended for use in all EU member states and EFTA countries, except in France and Italy where restrictive use applies.

This device is restricted to indoor use when operating in the 5150 to 5350 MHz frequency range in these countries:

					
AT	BE	BG	CH	CY	CZ
DE	DK	EE	EL	ES	FI
FR	HR	HU	IE	IS	IT
LI	LT	LU	LV	MT	NL
NO	PL	PT	RO	SE	SI
SK	TR	UK(NI)			

Frequency Range	Maximum Output Power (EIRP)
2412 - 2472 MHz	19.95 dBm
5180 - 5240 MHz	22.90 dBm

In Italy the end-user should apply for a license at the national spectrum authorities in order to obtain authorization to use the device for setting up outdoor radio links and/or for supplying public access to telecommunications and/or network services.


Restrictions: France (i) les dispositifs fonctionnant dans la bande 5150-5250 MHz sont réservés uniquement pour une utilisation à l'intérieur afin de réduire les risques de brouillage préjudiciable aux systèmes de satellites mobiles utilisant les mêmes canaux; (ii) De plus, les utilisateurs devraient aussi être avisés que les utilisateurs de radars de haute puissance sont désignés utilisateurs principaux (c.-à-d., qu'ils ont la priorité) pour les bandes 5 250-5 350 MHz et 5 650-5 850 MHz et que ces radars pourraient causer du brouillage et/ou des dommages aux dispositifs LAN-EL.

Dieses Gerät verfügt über Software, die die Einhaltung der Richtlinie über Funkanlagen (RED) 2014/53/EU nicht beeinträchtigen kann, selbst wenn die Software geändert oder ersetzt wird.

Die oben genannten Gerät entspricht den grundlegenden Anforderungen und anderen relevanten Bestimmungen der Richtlinie 2014/53/EU, wenn für den vorgesehenen Zweck verwendet werden. Dieses Gerät ist für die Verwendung in den USA, Kanada, and Europäische Union.

Einschränkungen: Frankreich –(i)-Geräte, die im Band 5150-5250 MHz ist nur für den Innenbereich, um das Risiko von Störungen des mobilen Satelliten-Systeme, die die gleichen Kanäle (ii) Darüber hinaus reduzieren vorbehalten, sollten Benutzer auch darauf hingewiesen werden, dass die Nutzer von Hochleistungs-Radare bezeichnet werden primäre Benutzer (dh d. sie haben Priorität) der Bänder 5 250-5 350 MHz und 5 650-5 850 MHz und dass diese Radargeräte können Störungen und / oder Schäden an LE-LAN-Geräten verursachen.

CE Notice

The  symbol on your WatchGuard Technologies equipment indicates that it is in compliance with the Electromagnetic Compatibility (EMC) directive and the Low Voltage Directive (LVD) of the European Union (EU).

Български	Този продукт е в съответствие с Директива 2014/53/ЕС.
Česky	Tento produkt je v souladu se směrnicí 2014/53/EU.
Dansk	Denne produkt er i overensstemmelse med direktiv 2014/53/EU.
Deutsch	Dieses Produkt entspricht der Richtlinie 2014/53/EU.
Eesti	See toode vastab direktiivile 2014/53/EL.
English	This product is in compliance with Directive 2014/53/EU.
Español	Este producto cumple con la Directiva 2014/53/UE.
Ελληνική	Το προϊόν αυτό συμμορφώνεται με την Οδηγία 2014/53/ΕΕ.
Français	Ce produit est conforme à la Directive 2014/53/UE.
Hrvatski	Ovaj proizvod je u skladu s Direktivom 2014/53/EU.
Italiano	Questo prodotto è conforme alla Direttiva 2014/53/EU.
Latviski	Šis produkts atbilst Direktīvai 2014/53/EU.
Lietuvių	Šis gaminys atitinka direktyvą 2014/53/ES.
Malti	Dan il-prodott huwa konformi mad-Direttiva 2014/53/UE.
Magyar	Ez a termék megfelel a 2014/53/EU irányelvnek.
Nederlands	Dit product is in overeenstemming met Richtlijn 2014/53/EU.
Norsk	Denne produktet er i samsvar med direktiv 2014/53/EU.
Polski	Ten produkt jest zgodny z dyrektywą 2014/53/UE.
Português	Este produto está em conformidade com a Diretiva 2014/53/UE.

Rumunski	Acest produs este în conformitate cu Directiva 2014/53/UE.
Slovensky	Tento produkt je v súlade so smernicou 2014/53/EÚ.
Slovensko	Ta izdelek je v skladu z Direktivo 2014/53/EU.
Suomi	Tämä tuote on direktiivin 2014/53/EU mukainen.
Svenska	Denna produkt överensstämmer med direktiv 2014/53/EU.

Declaration of Conformity

WatchGuard Technologies, Inc.
505 Fifth Ave. S., Suite 500
Seattle, WA 98104-3892 USA

WatchGuard Technologies Inc. hereby declares that the product(s) listed below conform to the European Union directives and standards identified in this declaration.

Product(s):

WatchGuard Model: Firebox T45-CW, Hardware Model: BS4AE5CW

EU Directive(s):

Low Voltage (2014/35/EU)
Electromagnetic Compatibility (2014/30/EU)
RoHS (2011/65/EU)
WEEE Directive 2012/19/EU
REACH EC 1907/2006
The Radio Equipment Directive (2014/53/EU)

Common Standard(s):

EN 60950-1: 2006+A11:2009+A1:2010+A12:2011+A2:2013	Safety for ITE
EN 62368-1:2014+A11:2017	Safety for ITE
EN 55032:2015/AC:2016-07	Emissions for ITE
EN 55024: 2010/A1:2015	Immunity for ITE
EN 55035:2017	Immunity for ITE
EN 300 386 V2.1.1 (2016-07)	Telecommunication network equipment
EN 61000-3-2:2019	Class A
EN 61000-3-3:2013+A1 : 2019	
EN 61000-4-2 Edition 2.0 2008-12	
EN 61000-4-3 Edition 3.2 2010-04	
EN 61000-4-4 Edition 3.0 2012-04	
EN 61000-4-5 Edition 3.1 2017-08	
EN 61000-4-6 Edition 4.0 2013-10	
EN 61000-4-11 Edition 2.1 2017-05	

Wireless Standard(s):

Draft ETSI EN 301 489-1 v2.1.1 (2017-03)	EMC and Radio Spectrum Matters
Draft ETSI EN 301 489-17 v3.1.1 (2017-02)	EMC and Radio Spectrum Matters
Draft ETSI EN301 489-52 v1.1.0 (2016-11)	EMC and Radio Spectrum Matters
EN 300 328 V2.2.2 (2019-11)-OJ Version	Radio Spectrum Matters
EN 301 893 v2.1.1 (2017-05)	Broadband Radio Access Networks
EN 301 908-1 V13.1.1 (2019-11)	Radio Spectrum Matters

This device complies with Directive 2014/53/EU issued by the Commission of the European Community.

Manufacturer / Hersteller: WatchGuard Technologies
505 5th Ave S. Suite 500, Seattle, WA 98104 USA

Radio Equipment / Funkanlage: Wireless Access Point
Type Designation / Typenbezeichnung: Firebox T45-CW
Specifications / Technische Daten: 802.11a/b/g/n/ac/ax (2.4GHz & 5GHz)
Intended Purpose / Verwendungszweck: Network Firewall Appliance

The above device complies with the essential requirements and other relevant provisions to Directive 2014/53/EU when used for its intended purpose. This equipment may be operated in the USA, Canada, & Europe Union.

Die oben genannten Gerät entspricht den grundlegenden Anforderungen und anderen relevanten Bestimmungen der Richtlinie 2014/53/EU, wenn für den vorgesehenen Zweck verwendet werden. Dieses Gerät ist für die Verwendung in den USA, Kanada, and Europäische Union.

Signature

Laurence Huang



Full Name: Laurence Huang
Position: Manufacturing Program Manager
Date and Place of Issue: 18 August 2022, Seattle, WA, USA

A full list of safety approvals, global compliance standards, and certifications can be found in the Hardware Guide for this device located on the WatchGuard website: <https://www.watchguard.com/wgrd-help/documentation/hardware-guides>

RoHS Statement

The Restriction of Hazardous Substances 2.0 (RoHS 2.0) in Electrical and Electronic Equipment Directive was passed into law by the European Union (EU). It affects manufacturers, sellers, distributors and recyclers of electrical and electronic equipment containing lead, cadmium, mercury, hexavalent chrome, polybrominated diphenylether (PBDE), polybrominated biphenyl (PBB), Bis (2-ethylhexyl) phthalate (DEHP), Butyl benzyl

phthalate (BBP), Dibutyl phthalate (DBP) and Diisobutyl phthalate (DIBP). After June 4, 2015 the use of these materials are banned in new products sold in Europe.

WatchGuard declares that all products listed herein comply with European Union RoHS Directive (RoHS 2.0 2011/65/EU and 2015/863/EU) requirements taking the following Annex III exemptions: [stating the list of exemptions, 6(c), 7(a), 7(C)-1].

Access Points: AP130, AP330, AP332CR, AP430CR, AP432

Firebox: N5V, T25, T25-W, T45, T45-PoE, T45-W-PoE, T45-CW, T85-PoE, M290, M390, M590, M690

Substances Listed	Limit
Cadmium(Cd)	≤ 0.01% (100 ppm)
Hexa-valent Chromium (Cr6+)	≤ 0.1% (1000 ppm)
Lead (Pb)	≤ 0.1% (1000 ppm) *
Mercury (Hg)	≤ 0.1% (1000 ppm)
Polybrominated biphenyls (PBB)	≤ 0.1% (1000 ppm)
Polybrominated diphenylethers (PBDE or PBBE)	≤ 0.1% (1000 ppm)
Bis (2-ethylhexyl) phthalate (DEHP)	≤ 0.1% (1000 ppm)
Butyl benzyl phthalate (BBP)	≤ 0.1% (1000 ppm)
Dibutyl phthalate (DBP)	≤ 0.1% (1000 ppm)
Diisobutyl phthalate (DIBP)	≤ 0.1% (1000 ppm)

* (contains Lead > 0.1% by weight because of exempted applications)

7a lead in high melting temperature type solders (i.e. lead based alloys containing 85 % by weight or more lead)

7(c) I. Electrical and electronic components containing lead in a glass or ceramic other than dielectric ceramic in capacitors, e.g. piezo electronic devices, or in a glass or ceramic matrix compound.

WEEE Statement

WatchGuard asks that all our products to be recycled at the end of their current use to comply with local waste compliance requirements.

WatchGuard supports the EU Waste Electrical and Electronic Equipment (WEEE) Directive (2012/19/EU). That means that WEEE may not be disposed as unsorted municipal waste but is to be collected separately.

WatchGuard products are therefore labeled with this symbol:



The WEEE symbol on your WatchGuard equipment indicates that it should not be disposed of by the end user with unsorted municipal waste, but in a manner consistent with required EU Directives, and the local transposition of the Directive in the end user's jurisdiction. The symbol is placed per CENELEC standard EN50419.

WEEE may contain hazardous substances which may negatively affect the environment and human health when disposed of through normal channels. Batteries that are not enclosed in the waste equipment must be separated from it and disposed of separately before being handed in at a collection point. Old batteries, and in certain cases also the waste equipment, can likewise be returned free of charge to the point of sale. You are

responsible for deleting any personal data on the waste equipment. WatchGuard is committed to reduce the negative environmental and human health effects of WEEE which will help prevent potential negative consequences for the environment and human health. If you are a consumer please use your local recycling option. This is usually your municipal refuse site.

Japan VCCI Notice (Class A ITE)

これはVCCI評議会の基準に基づくクラスA製品です。本製品がラジオやテレビ受信機の近くで使用されている場合は、電波障害を引き起こすことがあります。インストールして、取扱説明書に従って

機器を使用しています VCCI-A

Taiwan Class A Notice

警告使用者：這是甲類產品，應使用並正確安裝。本產品可能會造成無線電干擾，在這種情況下，用戶可能需要採取適當的措施。

警示 本電池如果更換不正確會有爆炸的危險，請勿自行更換電池

Taiwan BSMI CNS 15936 Type A Notice

警告:為避免電磁干擾，本產品不應安裝或使用於住宅環境。

Taiwan RoHS

設備名稱：次世代防火牆		號(型式)：NV5(BS1AE3), T25(BS2AE5), T25-W(BS2AE5W), T45(BS4AE5), T45-PoE(BS4AE5P), T45-W-PoE(BS4AE5PW), T45-CW(BS4AE5CW), T85-PoE(BL8AE8)				
Equipment name		Type designation (Type)				
單元Unit	限用物質及其化學符號 Restricted substances and its chemical symbols					
	鉛 Lead (Pb)	汞 Mercury (Hg)	鎘 Cadmium (Cd)	六價鉻 Hexavalent chromium (Cr ⁺⁶)	多溴聯苯 Polybrominat ed biphenyls (PBB)	多溴二苯醚 Polybrominated diphenyl ethers (PBDE)
產品內外殼(含框架)	○	○	○	○	○	○
電路板	○	○	○	○	○	○
電源供應器	○	○	○	○	○	○
配件(網路線)	○	○	○	○	○	○
其它固定組件(螺絲、夾具)	○	○	○	○	○	○
<p>Note 1: "Exceeding 0.1 wt%" and "exceeding 0.01 wt%" indicate that the percentage content of the restricted substance exceeds the reference percentage value of presence condition.</p> <p>備考1. "超出0.1 wt%" 及 "超出0.01 wt%" 係指限用物質之百分比含量超出百分比含量基準值。</p> <p>Note 2: "○" indicates that the percentage content of the restricted substance does not exceed the percentage of reference value of presence.</p> <p>備考2. "○" 係指該項限用物質之百分比含量未超出百分比含量基準值。</p> <p>Note 3: The "-" indicates that the restricted substance corresponds to the exemption.</p> <p>備考3. "-" 係指該項限用物質為排除項目。</p>						

Taiwan NCC

低功率電波輻射性電機管理辦法

第十二條 經型式認證合格之低功率射頻電機，非經許可，公司、商號或使用者均不得擅自變更頻率、

加大功率或變更原設計之特性及功能。

第十四條 低功率射頻電機之使用不得影響飛航安全及干擾合法通信；經發現有干擾現象時，應立即停用，並改善至無干擾時方得繼續使用。前項合法通信，指依電信法規定作業之無線電通信。低功率射頻電機須忍受合法通信或工業、科學及醫療用電波輻射性電機設備之干擾。

電磁波曝露量MPE標準值(MPE) 1mW/cm²，送測產品實值為0.338 mW/cm²

無線資訊傳輸設備避免影響附近雷達系統之操作

Brazil ANATEL Notice

Este equipamento não tem direito à proteção contra interferência prejudicial e não pode causar interferência em sistemas devidamente autorizados.



Mexico NOM Notice

La operación de este equipo está sujeta a las siguientes dos condiciones:

(i) es posible que este equipo o dispositivo no cause interferencia perjudicial y

(ii) este equipo o dispositivo debe aceptar cualquier interferencia, incluyendo la que pueda causar su operación no deseada.

Limited Hardware Warranty

This Limited Hardware Warranty (the "Warranty") applies to the enclosed hardware product, not including any associated software, which is licensed pursuant to a separate end-user license agreement and warranty (the "Product"). BY USING THE PRODUCT, YOU (either an individual or a single entity) AGREE TO THE TERMS HEREOF.

If you do not agree to these terms, please return this package, along with proof of purchase, to the authorized dealer from which you purchased it for a full refund. WatchGuard Technologies, Inc. ("WatchGuard") and you agree as set forth below or on the reverse side of this card, as applicable.

1. **LIMITED WARRANTY.** WatchGuard warrants that upon delivery and for one (1) year thereafter (the "Warranty Period"): (a) the Product will be free from material defects in materials and workmanship, and (b) the Product, when properly installed and used for its intended purpose and in its intended operating environment, will perform substantially in accordance with WatchGuard applicable specifications.

This warranty does not apply to any Product that has been: (i) altered, repaired or modified by any party other than WatchGuard except for the replacement or inclusion of specified components authorized in, and performed in strict accordance with, documentation provided by WatchGuard; or (ii) damaged or destroyed by force majeure events, accidents, power spikes or similar events or by any intentional, reckless or negligent acts or omissions of any party. You may have additional warranties with respect to the Product from the manufacturers of Product components. However, you agree not to look to WatchGuard for, and hereby release WatchGuard from any liability for, performance of, enforcement of, or damages or other relief on account of, any such warranties or any breach thereof.

2. **REMEDIES.** If any Product does not comply with the WatchGuard warranties set forth in Section 1 above, WatchGuard will, following the receipt of the product you claim is defective and at its option, either (a) repair the Product, or (b) replace the Product with a like or similar product; provided, that you will be responsible for returning the Product and for all costs of shipping and handling. Repair or replacement of the Product shall not extend the Warranty Period. Any Product, component, part or other item replaced by WatchGuard becomes the property of WatchGuard. WatchGuard shall not be responsible for return of or damage to any software, firmware, information or data contained in, stored on, or integrated with any returned Products.
3. **DISCLAIMER AND RELEASE.** THE WARRANTIES, OBLIGATIONS AND LIABILITIES OF WATCHGUARD, AND YOUR REMEDIES, SET FORTH IN PARAGRAPHS 1 AND 2 ABOVE ARE EXCLUSIVE AND IN SUBSTITUTION FOR, AND YOU HEREBY WAIVE, DISCLAIM AND RELEASE ANY AND ALL OTHER WARRANTIES, OBLIGATIONS AND LIABILITIES OF WATCHGUARD AND ALL OTHER RIGHTS, CLAIMS AND REMEDIES YOU MAY HAVE AGAINST WATCHGUARD, EXPRESS OR IMPLIED, ARISING BY LAW OR OTHERWISE, WITH RESPECT TO ANY NONCONFORMANCE OR DEFECT IN THE PRODUCT (INCLUDING, BUT NOT LIMITED TO, ANY IMPLIED WARRANTY OF MERCHANTABILITY OR FITNESS FOR A PARTICULAR PURPOSE, ANY IMPLIED WARRANTY ARISING FROM COURSE OF PERFORMANCE, COURSE OF DEALING, OR USAGE OF

TRADE, ANY WARRANTY OF NONINFRINGEMENT, ANY WARRANTY OF UNINTERRUPTED OR ERROR-FREE OPERATION, ANY OBLIGATION, LIABILITY, RIGHT, CLAIM OR REMEDY IN TORT, WHETHER OR NOT ARISING FROM THE NEGLIGENCE (WHETHER ACTIVE, PASSIVE OR IMPUTED) OR FAULT OF WATCHGUARD OR FROM PRODUCT LIABILITY, STRICT LIABILITY OR OTHER THEORY, AND ANY OBLIGATION, LIABILITY, RIGHT, CLAIM OR REMEDY FOR LOSS OR DAMAGE TO, OR CAUSED BY OR CONTRIBUTED TO BY, THE PRODUCT).

4. **LIMITATION AND LIABILITY.** WATCHGUARD'S LIABILITY (WHETHER ARISING IN CONTRACT (INCLUDING WARRANTY), TORT (INCLUDING ACTIVE, PASSIVE OR IMPUTED NEGLIGENCE AND STRICT LIABILITY AND FAULT) OR OTHER THEORY) WITH REGARD TO ANY PRODUCT WILL IN NO EVENT EXCEED THE PURCHASE PRICE PAID BY YOU FOR SUCH PRODUCT. THIS SHALL BE TRUE EVEN IN THE EVENT OF THE FAILURE OF ANY AGREED REMEDY. IN NO EVENT WILL WATCHGUARD BE LIABLE TO YOU OR ANY THIRD PARTY (WHETHER ARISING IN CONTRACT (INCLUDING WARRANTY), TORT (INCLUDING ACTIVE, PASSIVE OR IMPUTED NEGLIGENCE AND STRICT LIABILITY AND FAULT) OR OTHER THEORY) FOR COST OF COVER OR FOR ANY INDIRECT, SPECIAL, INCIDENTAL, OR CONSEQUENTIAL DAMAGES (INCLUDING WITHOUT LIMITATION LOSS OF PROFITS, BUSINESS, OR DATA) ARISING OUT OF OR IN CONNECTION WITH THIS WARRANTY OR THE USE OF OR INABILITY TO USE THE PRODUCT, EVEN IF WATCHGUARD HAS BEEN ADVISED OF THE POSSIBILITY OF SUCH DAMAGES. THIS SHALL BE TRUE EVEN IN THE EVENT OF THE FAILURE OF ANY AGREED REMEDY.
5. **MISCELLANEOUS PROVISIONS.** This Warranty will be governed by the laws of the state of Washington, U.S.A., without reference to its choice of law rules. The provisions of the 1980 United Nations Convention on Contracts for the International Sales of Goods, as amended, shall not apply. You agree not to directly or indirectly transfer the Product or use of the product or associated documentation to any country to which such transfer would be prohibited by the U.S. Export laws and regulations. If any provision of this Warranty is found to be invalid or unenforceable, then the remainder shall have full force and effect and the invalid provision shall be modified or partially enforced to the maximum extent permitted by law to effectuate the purpose of this Warranty. This is the entire agreement between WatchGuard and you relating to the Product, and supersedes any prior purchase order, communications, advertising or representations concerning the Product AND BY USING THE PRODUCT YOU AGREE TO THESE TERMS. IF THE PRODUCT IS BEING USED BY AN ENTITY, THE INDIVIDUAL INDICATING AGREEMENT TO THESE TERMS BY USING THE PRODUCT REPRESENTS AND WARRANTS THAT (A) SUCH INDIVIDUAL IS DULY AUTHORIZED TO ACCEPT THE WARRANTY ON BEHALF OF THE ENTITY AND TO BIND THE ENTITY TO THE TERMS OF THIS WARRANTY; (B) THE ENTITY HAS THE FULL POWER, CORPORATE OR OTHERWISE, TO ENTER INTO THE WARRANTY AND PERFORM ITS OBLIGATIONS UNDER THE WARRANTY AND; (C) THE WARRANTY AND THE PERFORMANCE OF THE ENTITY'S OBLIGATIONS UNDER THE WARRANTY DO NOT VIOLATE ANY THIRD-PARTY AGREEMENT TO WHICH THE ENTITY IS A PARTY.

No change or modification of the Warranty will be valid unless it is in writing and is signed by WatchGuard.

[Give Us Feedback](#) • [Get Support](#) • [All Product Documentation](#) • [Technical Search](#)

© 2023 WatchGuard Technologies, Inc. All rights reserved. WatchGuard and the WatchGuard logo are registered trademarks or trademarks of WatchGuard Technologies in the United States and other countries. Various other trademarks are held by their respective owners.