



Firebox[®] T85-PoE

Hardware Guide

Firebox[®] T85-PoE

BL8AE8

About This Guide

Information in this guide is subject to change without notice. Companies, names, and data used in examples herein are fictitious unless otherwise noted. No part of this guide may be reproduced or transmitted in any form or by any means, electronic or mechanical, for any purpose, without the express written permission of WatchGuard Technologies, Inc.

Guide revised: 10/27/2022

Copyright, Trademark, and Patent Information

Copyright © 1998 - 2022 WatchGuard Technologies, Inc. All rights reserved. All trademarks or trade names mentioned herein, if any, are the property of their respective owners.

Complete copyright, trademark, patent, and licensing information can be found in the Copyright and Licensing Guide, available online at <https://www.watchguard.com/wgrd-help/documentation/overview>.

About WatchGuard

WatchGuard® Technologies, Inc. is a global leader in network security, providing best-in-class Unified Threat Management, Next Generation Firewall, secure Wi-Fi, and network intelligence products and services to more than 75,000 customers worldwide. The company's mission is to make enterprise-grade security accessible to companies of all types and sizes through simplicity, making WatchGuard an ideal solution for Distributed Enterprises and SMBs. WatchGuard is headquartered in Seattle, Washington, with offices throughout North America, Europe, Asia Pacific, and Latin America. To learn more, visit WatchGuard.com.

For additional information, promotions and updates, follow WatchGuard on Twitter, @WatchGuard on Facebook, or on the LinkedIn Company page. Also, visit our InfoSec blog, Secplicity, for real-time information about the latest threats and how to cope with them at www.secplicity.org.

Address

505 Fifth Avenue South
Suite 500
Seattle, WA 98104

Support

www.watchguard.com/support
U.S. and Canada +877.232.3531
All Other Countries +1.206.521.3575

Sales

U.S. and Canada +1.800.734.9905
All Other Countries +1.206.613.0895

Contents

| | |
|---|-----------|
| Firebox T85-PoE Hardware Guide | 6 |
| Fireware OS..... | 6 |
| Package Contents..... | 6 |
| About Your Hardware..... | 7 |
| Hardware Specifications..... | 7 |
| Interface Specifications..... | 7 |
| Environmental Requirements..... | 8 |
| Hardware Description..... | 9 |
| Front View..... | 9 |
| Rear View..... | 11 |
| Built-In Interfaces..... | 11 |
| Cooling Fan..... | 12 |
| Interface Modules..... | 13 |
| 1 Port 10Gb SFP+ Interface Module..... | 13 |
| LTE Interface Module..... | 15 |
| Install an Interface Module..... | 17 |
| Remove an Interface Module..... | 17 |
| AC Power Adapter..... | 18 |
| Restore Factory-Default Settings..... | 20 |
| Notices | 21 |
| Product Safety Certification..... | 21 |
| Safety Warning..... | 21 |
| Disclaimer..... | 21 |
| Hinweise Zur Sicherheit..... | 21 |
| Sicherheitshinweis..... | 22 |
| Aviso De Seguridad..... | 22 |

| | |
|--|-----------|
| Certificación de seguridad del producto..... | 22 |
| Advertencia de seguridad..... | 22 |
| CE Notice..... | 23 |
| RoHS Statement..... | 23 |
| WEEE Statement..... | 23 |
| REACH..... | 24 |
| Taiwan RoHS..... | 24 |
| Limited Hardware Warranty..... | 25 |
| Declaration of Conformity..... | 27 |

Firebox T85-PoE Hardware Guide

WatchGuard Firebox is a comprehensive advanced network security platform that puts IT security professionals back in charge of their networks with widely deployable, enterprise-grade security and threat visibility tools suitable for any organization, regardless of budget, size, or complexity.

The Firebox T85-PoE is WatchGuard's highest performing tabletop Firebox appliance and supports up to 50 users in mid-size offices and includes two PoE+ (802.3at) ports, and a module bay with 1 x SFP+ module or 4G LTE module options available.

Fireware OS

The Firebox T85-PoE supports WatchGuard's next generation OS—Fireware® OS. Each Firebox appliance includes Fireware OS and delivers exceptional protection against today's sophisticated threats to make sure that your business stays connected. For more information on the features of Fireware OS, see [Fireware Help](#).

Package Contents

- Firebox T85-PoE appliance
- Quick Start Guide
- 1 RJ45 Ethernet cable
- 1 120v power adapter
- 1 power cord (US, AU, EU, UK)
- 4 rubber feet

About Your Hardware

Hardware Specifications

| | |
|--------------|---|
| Processor | NXP LS1046 1.8GHz |
| Memory | DDR4 4 GB |
| Storage | 128 GB M.2 SSD |
| Power Supply | Input Ratings: 90-264VAC, 2.2A, 47-63Hz Output Ratings : 54VDC |
| Dimensions | D = 205.5 mm (8.07") W = 290 mm (11.42") H = 43 mm (1.69") |
| Weight | 2.6 kg (5.82 lbs) |

Interface Specifications

| | |
|-----------------------|--|
| Network Interfaces | 8 RJ45 connectors, 1000 Base-TX (10/100/1000Mbps) Interfaces 6 and 7 support PoE (Power over Ethernet), compliant with the IEEE 802.3at standard |
| Expansion Bay Options | 1 Single port 10Gb SFP+ Interface Module (WG9010) LTE Interface Module (WG9015) (Micro SIM, 2 SMA-type antenna connectors) Antenna Gain (Peak): 0.93 dBi (617-960 MHz) 2.71 dBi (1710-2690 MHz) 3.66 dBi (3300-4200 MHz) 4.37 dBi (5150-7150 MHz) |
| I/O Interfaces | 2 USB 3.0, Type-A 1 RJ45 Serial Port |

Environmental Requirements

To safely install your Firebox, we recommend that you:

- Install it in indoors.
- Put it in a secure area, such as a locked room, to block the device from people who do not have permission to use it.
- Connect it to a conditioned power supply to prevent damage from sudden power changes.

Other environmental requirements:

- Operating temperature: 0° to 40°C (32° to 104°F)
- Operating humidity: 5% to 90% non-condensing
- Non-operating temperature: -40° to 70°C (-40° to 158°F)
- Non-operating humidity: 5% to 90%, non-condensing

Hardware Description

Front View

Front view of the Firebox:



Failover

The Failover indicator is lit when there is a WAN failover from the primary external interface to the backup interface. After the external interface connection fails back to the primary external interface, the indicator is not lit.

Network Interface Status Indicators

The Firebox T85-PoE has eight network interfaces. On the front panel, the network interfaces are labeled 7, 6, 5, 4, 3, 2, 1, 0. There are two status indicators for each interface. The light blinks when data is sent and received. The speed of the blink increases as the data flow increases.

| Indicator | Indicator | Interface Status |
|-----------------|-----------|---------------------------------|
| 1000 Yellow | On | Link speed: 1000 Mbps |
| 10/100 Green | On | Link speed: 10 Mbps or 100 Mbps |

Module

This indicator is lit when an interface module is installed.

Status

The Status indicator is red when there is a management connection to the device. The Status indicator is lit for 30 seconds after you connect to the device with the Fireware Web UI or the command line interface. It is also lit when the device is polled by WatchGuard System Manager.

Mode

The Mode indicator shows the status of the external network connection. If the device can connect to the external network and send traffic, the indicator is green. The indicator flashes if the device cannot send traffic to the external network.

Attn

The Attn indicator is yellow when you start the device with the Reset button pressed. For more information, see [Restore Factory-Default Settings](#).

Power (⏻)

The Power indicator is lit to indicate power status. It is green when the Firebox is powered on.

Rear View

Rear view of the Firebox:



Reset Button

This resets the device. To restore the device to factory-default settings, see [Restore Factory-Default Settings](#).

Power Switch

Controls the power supplied to the device. Move the switch to position 1 to power on the device, or position 0 to power it off.

Power Input

An AC power adapter is included with your device. Connect the AC adapter to the device and to a power source. The power supply tip is plus (+) polarity. Use only the supplied AC power adapter.

Built-In Interfaces

Serial Port (Console)

The leftmost port is an RJ45 serial console port. An RJ45 serial cable is not included with the device.

USB Interfaces

The device includes two USB interfaces. Connect a USB storage device for USB backup and restore, or to store a support snapshot. For more information, see [Fireware Help](#).

Network Interfaces

The Ethernet interfaces have standard RJ45 connectors and support link speeds of 10, 100, or 1000 Mbps. These interfaces are labeled 0/WAN, 1/LAN, 2, 3, 4, 5, 6-PoE, 7-PoE. Interfaces 6 and 7 are PoE (Power over Ethernet) interfaces, compliant with the IEEE 802.3at standard.

Cooling Fan

The side of the Firebox has a cooling fan that adjusts its speed as needed to decrease the internal temperature of the device.

- The fan is designed to start at boot time at a speed of 350 RPM to maintain an optimal temperature.
- When the temperature rises, and the CPU temperature exceeds 79°C or the thermal sensor exceeds 71°C, the fan speed increases to 1500 RPM.
- When the CPU temperature drops to 66°C, or the thermal sensor drops to 58°C, the fan speed decreases to the default 350 RPM.
- The Firebox reboots if the CPU temperature is greater than 84°C or the thermal sensor is greater than 76°C.
- The Firebox shuts down when CPU temperature is greater than 100°C.



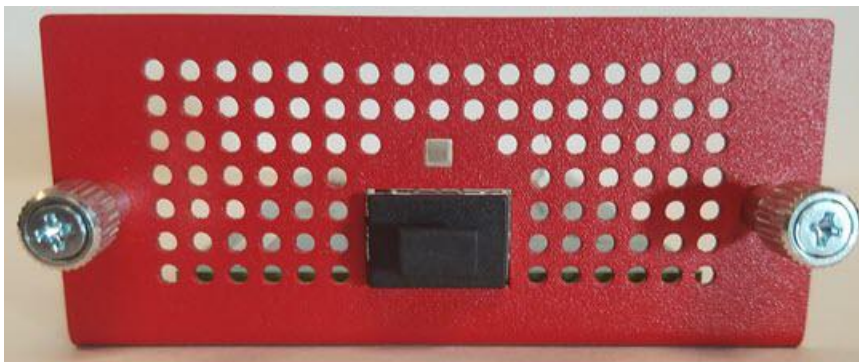
Do not insert a pointed object to attempt to touch or move the fan blades.

Interface Modules

The Firebox T85-PoE includes an expansion bay for additional interface modules. You must install the expansion module before you can configure the interfaces.

1 Port 10Gb SFP+ Interface Module

This interface module features a 10Gb SFP+ Copper Ethernet port (WG9010).



The SFP+ port has one LED indicator above the port.

| Indicator | Interface Status |
|-------------------------|------------------------|
| Solid Yellow | Connection, no traffic |
| Blinks Green and Yellow | Connection, traffic |

You can purchase compatible SFP+ modules from an authorized WatchGuard reseller.

SFP+ multi-mode transceivers (10GBase-SR/1000Base-SX, 850 nm)

- WatchGuard WG8583
- Finisar FTLX8571D3BCV
- Finisar FTLX8571D3BCL
- Cisco SFP-10G-SR

SFP multi-mode transceivers (1000Base-SX, 850nm)

- WatchGuard WG8585
- Finisar FTLF8519P3BNL
- Avago AFBR-5710PZ

SFP single-mode transceivers (1000Base-LX, 1310nm, up to 10km)

- Finisar FTLF1318P3BTL

SFP copper transceivers

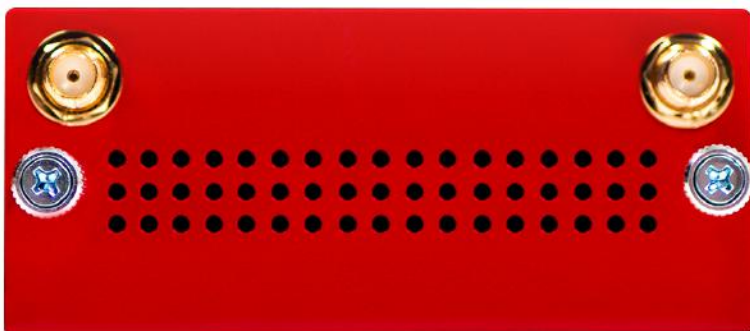
- WatchGuard WG8584
- Olink OLST12R-CNS1
- Fiberstore SFP-1GT-1MA-JU

LTE Interface Module

The LTE interface module (WG9015) enables you to install a SIM card for a 4G LTE cellular connection. You can use this cellular connection as an external interface on the Firebox for WAN connectivity.



Verizon is currently not yet supported for 4G LTE access with the LTE module.



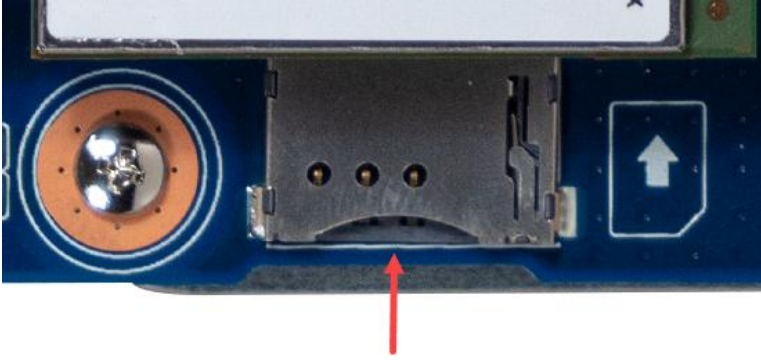
The LTE module comes with two external antennas. Insert the antennas in the SMA-type antenna connectors on the module, then turn clockwise to tighten. We recommend you install the antennas at a 45 degree angle to optimize signal strength and reduce interference.



To install the SIM card, insert a Micro or Nano SIM card into the slot on the LTE interface module before you install the module into the Firebox.



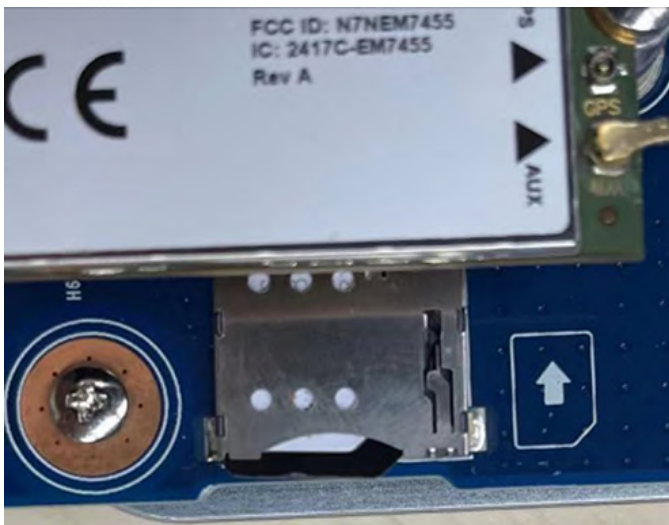
The LTE interface module comes with an adapter that enables you to insert a Nano SIM card into the SIM card slot.



Align the direction of the SIM card and the placement of the diagonal edge based on the diagram beside the SIM card slot.



Make sure the SIM card is fully inserted into the slot.



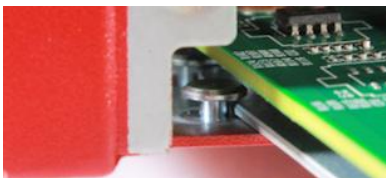
Install an Interface Module



Interface Modules are not hot-swappable. To avoid damage to the system, you must disconnect the Firebox from the power source before you install or remove an interface module.

To install an interface module:

1. Power off the Firebox, and disconnect the power cable.
2. Loosen the two captive screws on the expansion bay cover of the Firebox and remove the cover.
The expansion bay contains guideposts on both sides to help you align the module.
3. Align the metal plate on the bottom of the interface module between the guideposts on both sides.



4. Insert the interface module into the expansion bay, and push the module firmly into place.
5. Tighten the two captive screws on the interface module.
6. Reconnect the power cable to the Firebox.
7. Power on the Firebox.

When the Firebox starts, Fireware automatically detects all installed interfaces.

Remove an Interface Module



Before you remove an installed interface module, make sure that the interfaces on that module are not enabled in the Firebox configuration. You cannot manage a Firebox if an enabled interface has been removed.

To remove an installed interface module:

1. Power off the Firebox, and disconnect the power cable.
2. Loosen the two screws on the installed interface module.
3. Slide the interface module out of the expansion bay.
4. Put the removed interface module on an antistatic surface.
5. Install the expansion bay cover and tighten the two captive screws.

AC Power Adapter

The AC power adapter supplies power for the Firebox. Before you connect the adapter, verify that the color band on the cord matches the color ring around the power plug on the Firebox.

To safely disconnect the power supply:

Slide the black plastic external housing away from the Firebox to expose the internal silver metal connector. With the internal silver connector exposed, continue to pull to disconnect the cord.



The Firebox T85-PoE includes a power cable to connect to the AC power adapter.

The suffix on the Firebox SKU indicates the type of power plug included with the device. Note that the suffix is not restrictive - for instance, though tagged as “AU” for Australia, the Type I plug is also used in China, New Zealand, and Argentina. If your country does not use one of these four plugs, use an adapter with one of these plugs.

| SKU Suffix | Plug Type | Used in regions | Photo |
|------------|-----------|--|--|
| -US | A | US, Canada, Japan, Taiwan, Central America, Some countries in South America, Philippines |  |
| -UK | G | United Kingdom, Ireland, Hong Kong, Singapore, Malaysia, some African countries |  |
| -EU | C | Europe, Middle East, Korea, Indonesia, some African countries |  |
| -AU | I | China, Australia, New Zealand |  |

Restore Factory-Default Settings

If you have a problem in your configuration file that you cannot correct, you can restore the factory-default settings and start from a new configuration file. For example, if you do not know the administrator account passphrase, or if a power interruption causes damage to the Fireware OS, you can restore the Firebox to the factory-default settings and build your configuration again.

To reset the Firebox to factory-default settings:

1. Power off the Firebox.
2. Press and hold the **Reset** button on the back of the Firebox.
3. Power on the Firebox while you continue to hold the **Reset** button.
4. Continue to hold the **Reset** button until the **Attn** indicator on the front of the Firebox begins to flash.
5. Release the **Reset** button.
6. Wait until the **Attn** indicator stays lit and does not flash.
7. Power off the Firebox.
8. Power on the Firebox.

The Firebox restarts with factory-default settings.

Notices

All WatchGuard products are designed and tested to meet strict safety requirements. These requirements include product safety approvals and other global compliance standards. Please read the following instructions carefully before operating the product, and refer to them as needed to ensure the continued safe operation of your product.

Product Safety Certification

The WatchGuard product is safety certified under the following standards:

- CAN/CSA C22.2 No.60950-1-07, Second Edition 2014-10
- UL 60950-1, Second Edition 2014-10-14
- IEC 60950-1, 2005+A1:2009+A2:2013
- IEC 62368-1: 2014 2nd edition
- EN 60950-1:2006+A11:2009+A1:2010+A12:2011+A2:2013

Safety Warning

- Do not place objects on the power cord.
- Do not obstruct the ventilation openings. These openings prevent overheating of the machine.
- Never push objects of any kind into slots or openings on this equipment. Making a contact with a voltage point or shorting out a part may result in fire or electrical shock.
- When removing or installing an appliance, follow the general installation safety instructions.
- You must disconnect the AC power cord from the Firebox before you remove the cover of the Firebox for any reason.
- There is risk of explosion if the battery is replaced by an incorrect type. Dispose of used batteries according to the manufacturer's instructions.
- 警示 本電池如果更換不正確會有爆炸的危險, 請勿自行更換電池

Disclaimer

WatchGuard shall not be held liable if the end user alters, modifies, or repairs any WatchGuard hardware appliance.

Hinweise Zur Sicherheit

Alle WatchGuard Produkte werden entwickelt und getestet, um strenge Sicherheitsanforderungen zu erfüllen. Diese Anforderungen umfassen Produktsicherheit Zulassungen und andere globale Compliance-Standards. Bitte lesen Sie die folgenden Anweisungen sorgfältig, bevor Sie das Produkt, und bezeichnen sie als notwendig, um den sicheren Betrieb des Geräts zu gewährleisten. Weitere

Informationen finden Sie in der elektronischen Hardware Guide.

Die WatchGuard Produkt ist Sicherheit unter den folgenden Normen zertifiziert

- CAN/CSA C22.2 No.60950-1-07, Second Edition 2014-10
- UL 60950-1, Second Edition 2014-10-14
- IEC 60950-1:2005+A1:2009+A2:2013
- IEC 62368-1: 2014 2nd edition
- EN 60950-1:2006+A11:2009+A1:2010+A12:2011+A2:2013

Sicherheitshinweis

- Legen Sie keine Gegenstände auf das Netzkabel.
- Verdecken Sie nicht die Lüftungsöffnungen. Diese Öffnungen verhindern eine Überhitzung der Maschine.
- Stecken Sie niemals Gegenstände jeglicher Art in die Schlitze oder Öffnungen des Geräts stecken. Der Kontakt mit einem spannungsführenden Punkt oder das Kurzschließen eines Bauteils kann zu einem Brand oder elektrischen Schlag führen.
- Beim Entfernen oder Installieren eines Gerätes, nach den allgemeinen Installation Sicherheitshinweise.

Aviso De Seguridad

Todos los productos WatchGuard están diseñados y probados para satisfacer estrictos requisitos de seguridad. Estos requisitos incluyen la homologación de productos de seguridad y otras normas de cumplimiento global. Por favor, lea atentamente las siguientes instrucciones antes de utilizar el producto, y se refieren a ellos como sea necesario para garantizar el funcionamiento seguro y continuo de su producto. Información adicional se puede encontrar en la Guía del usuario electrónica.

Certificación de seguridad del producto

El producto tiene certificación de seguridad WatchGuard bajo las siguientes normas:


- CAN/CSA C22.2 No.60950-1-07, Second Edition 2014-10
- UL 60950-1, Second Edition 2014-10-14
- IEC 60950-1:2005+A1:2009+A2:2013
- IEC 62368-1: 2014 2nd edition
- EN 60950-1:2006+A11:2009+A1:2010+A12:2011+A2:2013

Advertencia de seguridad

- No coloque objetos sobre el cable de alimentación.
- No obstruya las aberturas de ventilación. Estas aberturas evitan el sobrecalentamiento de la máquina.

- Nunca introduzca objetos de ningún tipo en las ranuras o aberturas del equipo. El contacto con puntos de voltaje o el cortocircuito de una pieza podría provocar un incendio o una descarga eléctrica.
- Al extraer o instalar un electrodoméstico, siga las instrucciones generales de instalación de seguridad.

CE Notice

The  symbol on your WatchGuard Technologies equipment indicates that it is in compliance with the Electromagnetic Compatibility (EMC) directive and the Low Voltage Directive (LVD) of the European Union (EU).

RoHS Statement

The member states of the European Union approved directive 2002/95/EC, Restrictions of Hazardous Substances (“RoHS directive”) that became valid on July 1, 2006. It states that all new electrical and electronic equipment put on the market within the member states must not contain certain hazardous materials. This device complies with the European Union’s RoHS directive 2002/95/EC and similar regulations that may be adopted by other countries for European Sales.

WEEE Statement

WEEE is a general set of requirements dictated in the EU Directive 2002/96/EC. This Directive mandated that member EU countries enact regulations governing the Waste of Electrical and Electronic Equipment (WEEE). The Directive, and its individual transpositions into specific country laws and legislation, is aimed at the reduction of WEEE through reuse, recovery, and recycling of WEEE.

WatchGuard is working in partnership with our European Union (EU) distribution partners to ensure that our products are in compliance with the WEEE statutes, and that the recovery of our product per the specific EU country legislative requirements is seamless for our product’s end users. If you have a WatchGuard product that is at its end of life and needs to be disposed of, please contact WatchGuard Customer Care Department at:

U.S. Customers: 877.232.3531 International Customers: +1.206.613.0456

WatchGuard is reasonably confident that our products do not contain any substances or hazardous materials presently banned by any legislation, and do not present a risk due to hazardous materials. WEEE recovery professionals should also note that these products do not have any materials that are of particular high value in their individual form.

REACH

The new EU chemicals policy REACH (Registration, Evaluation, Authorization and restriction of Chemicals) came into effect on June 1, 2007. REACH is Europe's new chemicals legislation, which is applicable in all 27 EU Member States as well as the EFTA European Economic Area (EEA). REACH creates a new system for gathering information, assessing risks to human health and the environment, and authorizing or restricting the marketing and use of chemicals produced or supplied in the EEA. REACH has an impact on EEA producers and importers of finished products and users of chemicals in the course of industrial or professional activities.

WatchGuard supports the overall REACH objective of improving the protection of human health and the environment and will meet all applicable REACH requirements. WatchGuard is strongly committed to working with our customers and supply chain to define and implement the REACH requirements and ensure a smooth transition to compliance.

One of the REACH requirements is that manufacturers and importers have the duty to register substances they are producing or importing. In accordance with the regulations, the products of WatchGuard do not need to be registered for the following reasons:

- WatchGuard does not import more than 1 metric ton per year of a substance as defined by REACH.
- WatchGuard products are non-chemical products that are not designed to release any substance under normal and reasonably predictable application.
- Our products do not contain the listed substances at more than 0.1% by weight of the whole product/part.

Taiwan RoHS

| 設備名稱: 次世代防火牆 Equipment name | | 型號(型式): NV5(BS1AE3), T25(BS2AE5), T25-W(BS2AE5W), T45(BS4AE5), T45-PoE(BS4AE5P), T45-W-PoE(BS4AE5PW), and T45-CW(BS4AE5CW) Type designation (Type) | | | | |
|--------------------------------|--|---|------------------|--|--|--|
| 單元 Unit | 限用物質及其化學符號 Restricted substances and its chemical symbols | | | | | |
| | 鉛Lead (Pb) | 汞Mercury (Hg) | 鎘Cadmium (Cd) | 六價鉻 Hexavalent chromium (Cr ⁶⁺) | 多溴聯苯 Polybrominated biphenyls (PBB) | 多溴二苯醚 Polybrominated diphenyl ethers (PBDE) |
| 產品內外殼 (含框架) | ○ | ○ | ○ | ○ | ○ | ○ |
| 電路板 | ○ | ○ | ○ | ○ | ○ | ○ |
| 電源供應器 | ○ | ○ | ○ | ○ | ○ | ○ |
| 配件(網路 線) | ○ | ○ | ○ | ○ | ○ | ○ |
| 其它固定組 件(螺絲、夾 具) | ○ | ○ | ○ | ○ | ○ | ○ |

備考1: "超出0.1 wt%"及"超出0.01 wt%"係指限用物質之百分比含量超出百分比含量基準值。
Note 1: "Exceeding 0.1 wt%" and "exceeding 0.01 wt%" indicate that the percentage content of the restricted substance exceeds the reference percentage value of presence condition.

備考2: "○"係指該項限用物質之百分比含量未超出百分比含量基準值。
Note 2: "○" indicates that the percentage content of the restricted substance does not exceed the percentage of reference value of presence.

備考3: "—"係指該項限用物質為排除項目。
Note 3: The "-" indicates that the restricted substance corresponds to the exemption.

Limited Hardware Warranty

This Limited Hardware Warranty (the “Warranty”) applies to the enclosed hardware product, not including any associated software, which is licensed pursuant to a separate end-user license agreement and warranty (the “Product”). BY USING THE PRODUCT, YOU (either an individual or a single entity) AGREE TO THE TERMS HEREOF.

If you do not agree to these terms, please return this package, along with proof of purchase, to the authorized dealer from which you purchased it for a full refund. WatchGuard Technologies, Inc. (“WatchGuard”) and you agree as set forth below or on the reverse side of this card, as applicable.

1. **LIMITED WARRANTY.** WatchGuard warrants that upon delivery and for one (1) year thereafter (the “Warranty Period”): (a) the Product will be free from material defects in materials and workmanship, and (b) the Product, when properly installed and used for its intended purpose and in its intended operating environment, will perform substantially in accordance with WatchGuard applicable specifications.

This warranty does not apply to any Product that has been: (i) altered, repaired or modified by any party other than WatchGuard except for the replacement or inclusion of specified components authorized in, and performed in strict accordance with, documentation provided by WatchGuard; or (ii) damaged or destroyed by force majeure events, accidents, power spikes or similar events or by any intentional, reckless or negligent acts or omissions of any party. You may have additional warranties with respect to the Product from the manufacturers of Product components. However, you agree not to look to WatchGuard for, and hereby release WatchGuard from any liability for, performance of, enforcement of, or damages or other relief on account of, any such warranties or any breach thereof.

2. **REMEDIES.** If any Product does not comply with the WatchGuard warranties set forth in Section 1 above, WatchGuard will, following the receipt of the product you claim is defective and at its option, either (a) repair the Product, or (b) replace the Product with a like or similar product; provided, that you will be responsible for returning the Product and for all costs of shipping and handling. Repair or replacement of the Product shall not extend the Warranty Period. Any Product, component, part or other item replaced by WatchGuard becomes the property of WatchGuard. WatchGuard shall not be responsible for return of or damage to any software, firmware, information or data contained in, stored on, or integrated with any returned Products.
3. **DISCLAIMER AND RELEASE.** THE WARRANTIES, OBLIGATIONS AND LIABILITIES OF WATCHGUARD, AND YOUR REMEDIES, SET FORTH IN PARAGRAPHS 1 AND 2 ABOVE ARE EXCLUSIVE AND IN SUBSTITUTION FOR, AND YOU HEREBY WAIVE, DISCLAIM AND RELEASE ANY AND ALL OTHER WARRANTIES, OBLIGATIONS AND LIABILITIES OF WATCHGUARD AND ALL OTHER RIGHTS, CLAIMS AND REMEDIES YOU MAY HAVE AGAINST WATCHGUARD, EXPRESS OR IMPLIED, ARISING BY LAW OR OTHERWISE, WITH RESPECT TO ANY NONCONFORMANCE OR DEFECT IN THE PRODUCT (INCLUDING, BUT NOT LIMITED TO, ANY IMPLIED WARRANTY OF MERCHANTABILITY OR FITNESS FOR A PARTICULAR PURPOSE, ANY IMPLIED WARRANTY ARISING FROM COURSE OF PERFORMANCE, COURSE OF DEALING, OR USAGE OF TRADE, ANY WARRANTY OF NONINFRINGEMENT, ANY WARRANTY OF UNINTERRUPTED OR ERROR-FREE OPERATION, ANY OBLIGATION,

LIABILITY, RIGHT, CLAIM OR REMEDY IN TORT, WHETHER OR NOT ARISING FROM THE NEGLIGENCE (WHETHER ACTIVE, PASSIVE OR IMPUTED) OR FAULT OF WATCHGUARD OR FROM PRODUCT LIABILITY, STRICT LIABILITY OR OTHER THEORY, AND ANY OBLIGATION, LIABILITY, RIGHT, CLAIM OR REMEDY FOR LOSS OR DAMAGE TO, OR CAUSED BY OR CONTRIBUTED TO BY, THE PRODUCT).

4. **LIMITATION AND LIABILITY.** WATCHGUARD'S LIABILITY (WHETHER ARISING IN CONTRACT (INCLUDING WARRANTY), TORT (INCLUDING ACTIVE, PASSIVE OR IMPUTED NEGLIGENCE AND STRICT LIABILITY AND FAULT) OR OTHER THEORY) WITH REGARD TO ANY PRODUCT WILL IN NO EVENT EXCEED THE PURCHASE PRICE PAID BY YOU FOR SUCH PRODUCT. THIS SHALL BE TRUE EVEN IN THE EVENT OF THE FAILURE OF ANY AGREED REMEDY. IN NO EVENT WILL WATCHGUARD BE LIABLE TO YOU OR ANY THIRD PARTY (WHETHER ARISING IN CONTRACT (INCLUDING WARRANTY), TORT (INCLUDING ACTIVE, PASSIVE OR IMPUTED NEGLIGENCE AND STRICT LIABILITY AND FAULT) OR OTHER THEORY) FOR COST OF COVER OR FOR ANY INDIRECT, SPECIAL, INCIDENTAL, OR CONSEQUENTIAL DAMAGES (INCLUDING WITHOUT LIMITATION LOSS OF PROFITS, BUSINESS, OR DATA) ARISING OUT OF OR IN CONNECTION WITH THIS WARRANTY OR THE USE OF OR INABILITY TO USE THE PRODUCT, EVEN IF WATCHGUARD HAS BEEN ADVISED OF THE POSSIBILITY OF SUCH DAMAGES. THIS SHALL BE TRUE EVEN IN THE EVENT OF THE FAILURE OF ANY AGREED REMEDY.
5. **MISCELLANEOUS PROVISIONS.** This Warranty will be governed by the laws of the state of Washington, U.S.A., without reference to its choice of law rules. The provisions of the 1980 United Nations Convention on Contracts for the International Sales of Goods, as amended, shall not apply. You agree not to directly or indirectly transfer the Product or use of the product or associated documentation to any country to which such transfer would be prohibited by the U.S. Export laws and regulations. If any provision of this Warranty is found to be invalid or unenforceable, then the remainder shall have full force and effect and the invalid provision shall be modified or partially enforced to the maximum extent permitted by law to effectuate the purpose of this Warranty. This is the entire agreement between WatchGuard and you relating to the Product, and supersedes any prior purchase order, communications, advertising or representations concerning the Product AND BY USING THE PRODUCT YOU AGREE TO THESE TERMS. IF THE PRODUCT IS BEING USED BY AN ENTITY, THE INDIVIDUAL INDICATING AGREEMENT TO THESE TERMS BY USING THE PRODUCT REPRESENTS AND WARRANTS THAT (A) SUCH INDIVIDUAL IS DULY AUTHORIZED TO ACCEPT THE WARRANTY ON BEHALF OF THE ENTITY AND TO BIND THE ENTITY TO THE TERMS OF THIS WARRANTY; (B) THE ENTITY HAS THE FULL POWER, CORPORATE OR OTHERWISE, TO ENTER INTO THE WARRANTY AND PERFORM ITS OBLIGATIONS UNDER THE WARRANTY AND; (C) THE WARRANTY AND THE PERFORMANCE OF THE ENTITY'S OBLIGATIONS UNDER THE WARRANTY DO NOT VIOLATE ANY THIRD-PARTY AGREEMENT TO WHICH THE ENTITY IS A PARTY.

No change or modification of the Warranty will be valid unless it is in writing and is signed by WatchGuard.

Declaration of Conformity

DECLARATION OF CONFORMITY

WatchGuard Technologies, Inc.
505 Fifth Ave. S., Suite 500
Seattle, WA 98104-3892 USA

WatchGuard Technologies Inc. hereby declares that the product(s) listed below conform to the European Union directives and standards identified in this declaration.

Product(s):

WatchGuard Product Name : Firebox T85
Hardware Model : BL8AE8

EU Directive(s):

Low Voltage (2014/35/EC)
Electromagnetic Compatibility (2014/30/EU)
RoHS EU 2015/863(RoHS2)
WEEE Directive 2012/19/EU
REACH EC 1907/2006,

Standard(s):

Safety: EN 62368-1:2014+A11:2017
Emission: EN 55032 :2015/A11 :2020
FCC Part 15B
ICES-003 Issue 7
CISPR 32:2015+AMD1:2019
VCCI-CISPR 32:2016
AS/NZS CISPR 32:2015/AMD1:2020

Immunity: EN 61000-3-2:2014
EN 61000-3-3:2013+A1:2019
EN 55035:2017/A11:2020
IEC 61000-4-2 Edition 2.0 2008-12
IEC 61000-4-3 Edition 3.2 2010-04
IEC 61000-4-4 Edition 3.0 2012-04
IEC 61000-4-5 Edition 3.1 2017-08
IEC 61000-4-6 Edition 4.0 2013-10
IEC 61000-4-8 Edition 2.0 2009-09
IEC 61000-4-11 Edition 3.0 2020-01

Signature: *Laurence Huang*



Full Name: Laurence Huang
Position: Hardware Program Manager
Date: 2 June 2022